

NX Durability Wizard: Quickly predict product fatigue

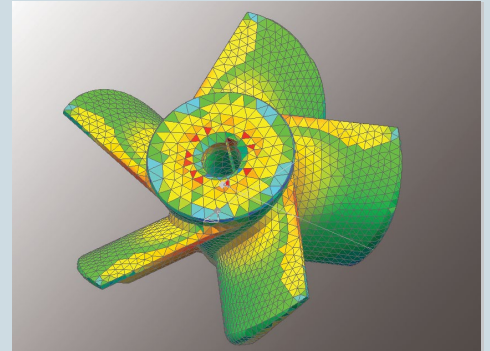
NX CAE

Benefits

- Improves robustness by predicting the life of product designs and determining which design features are over- or under-designed
- Reduces physical testing costs by allowing you to analyze product life in a virtual environment
- Accelerates product design by allowing designers to quickly perform what-if “re-analysis” of new designs to understand the impact of changes on product durability

Summary

NX™ Durability Wizard guides you in validating your product’s structural integrity over its entire lifecycle. NX Durability Wizard is an add-on module to either NX Modeling, NX Design Simulation or NX Advanced Simulation that uses stresses or strains from static solutions to examine product durability, helping you to establish which parts are over- or under-designed. Contour plots of fatigue life and safety factors make it easy to understand durability issues.



A simple and flexible way to predict a product’s strength and durability
Structural fatigue analysis is used to predict design life and durability. Designers and structural analysts can check whether in-service loadings are likely to cause early failure in parts subjected to cyclic loads.

The NX Durability Wizard provides an intuitive, guided process for designers and less experienced CAE users, enabling them to predict the strength and fatigue safety of products subjected to prescribed cyclic loading.

The wizard guides you through these simple steps to assess durability of your model:

1. *Choose the structural solution containing the loading conditions.* You can use linear stress or strain results in static solutions from the NX Stress Wizard, NX Nastran, MSC Nastran, Abaqus or ANSYS.
2. *Define the cyclic loadings that define the duty cycle of the part over its lifetime.* Parameters you can define include number of cycles, scaling factor, and loading pattern.
3. *Define the results you wish to compute.* You can compute static safety factors, fatigue safety factors and fatigue life.
4. *Define durability parameters and launch the durability solution.* You can select the fatigue criterion you want for the fatigue life calculation: Smith-Watson-Topper, strain or stress life.

NX

www.siemens.com/nx

SIEMENS

NX Durability Wizard

5. *Display contour plots on your FE model.* You can display contour plots for strength safety factor, fatigue safety factor or fatigue life.
6. *Prepare a technical durability report in a spreadsheet.* You can export results to an Excel spreadsheet for further evaluation or to share with other members in your organization.
7. *Save time with "what-if" re-designs.* The durability solution remains associated to your model and geometry, allowing you to re-run the solution with different durability criteria so you can see their effects on your product. Furthermore, as your design changes, you can easily re-run your durability analyses to see how your design changes impact durability performance.

- Run from NX Design Simulation or NX Advanced Simulation to leverage stress results from third-party solvers
- Leverage geometry associativity to quickly evaluate the impact of changing geometrical features on fatigue resistance
- Enable NX Advanced Durability to re-use events automatically created by the Durability Wizard

Solutions and supported solvers

- Supports stress (high-cycle) and strain (low-cycle) approaches
- Supports stress results from NX Stress Wizard, NX Nastran, MSC Nastran, Abaqus or ANSYS

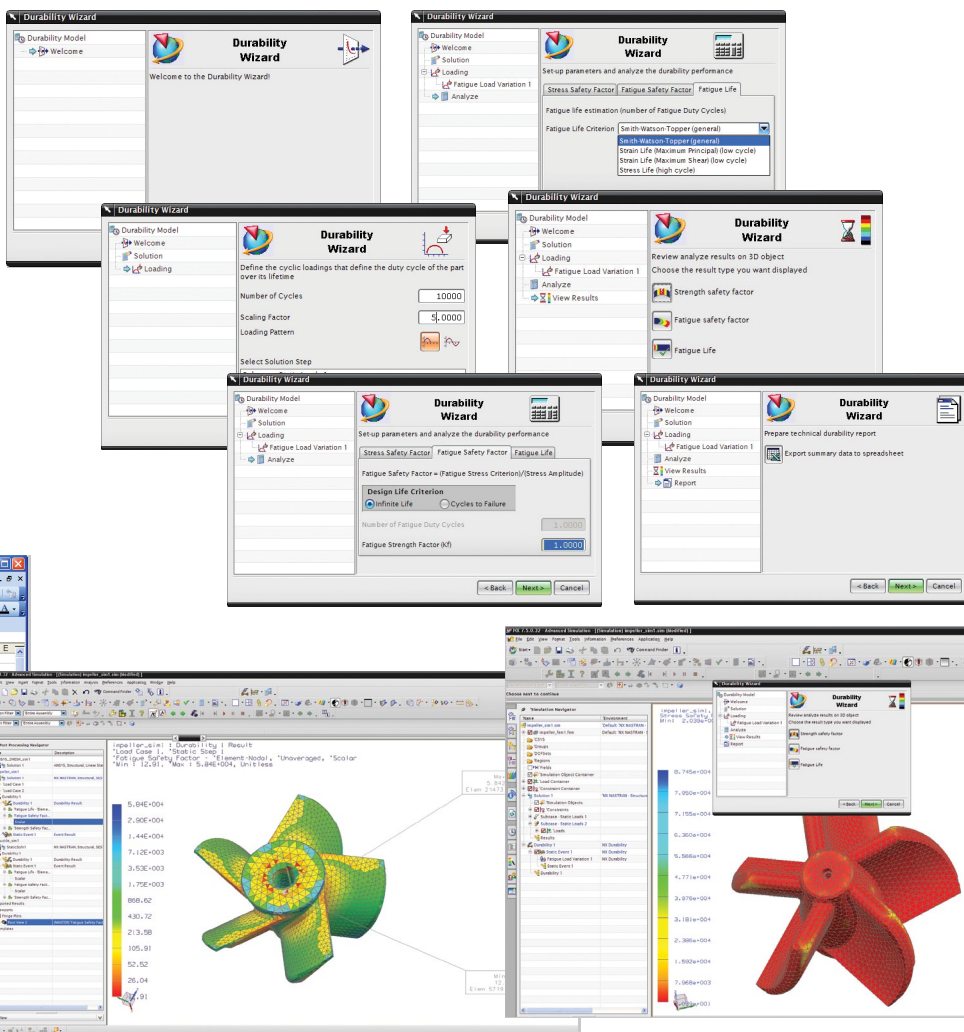
Postprocessing

- Contour plots for fatigue life, damage and safety factors
- Durability reports

General features for the NX Durability Wizard include:

NX Integration

- Designers can run from within NX Modeling leveraging results from the NX Stress Wizard to compute fatigue and strength metrics at preliminary design stages



Microsoft Excel - Worksheet in 'Durability - Information'

#Durability 1				
3	Fatigue Load Variations			
4	Load Variation	Number of Cycles	Scaling Factor	Scaling Function
5	#Fatigue Load Variation 1	10000	5.000000	Half Unit Cycle
7	Fatigue Analysis Options			
8	Evaluation Type	Options		
9	Stress Safety Factors	#Stress Criterion: Ultimate Strength		
10	Fatigue Safety Factors	Stress Type: Von Mises		
11	Fatigue Life	#Number of Fatigue Duty Cycles: 1e+020		
12		Fatigue Strength Factor 1		
13		#Fatigue Life Criterion: Smith-Watson-Toppoer(general)		
14	Results			
15	Coordinate System	Absolute Rectangular		
16	Number of Load Cases	1		
17	Lead Case 1: Number of Iterations = 1			
18	Iteration 1			
19	Max	Strength Safety Factor(Infinites)	Fatigue Safety Factor(0) Fatigue Life(DutyCycl	
20	Min	1.79E+04	1.14E+03	1.00E+00
21		4.08E+00	8.94E-01	1.96E+00
22				
23				
24				
25				
26				

Contact
 Siemens Industry Software
 Americas +1 800 498 5351
 Europe +44 (0) 1276 702000
 Asia-Pacific +852 2230 3333

www.siemens.com/nx

© 2011 Siemens Product Lifecycle Management Software Inc. All rights reserved. Siemens and the Siemens logo are registered trademarks of Siemens AG. D-Cubed, Femap, Geolus, GO PLM, I-deas, Insight, JT, NX, Parasolid, Solid Edge, Teamcenter, Tecnomatix and Velocity Series are trademarks or registered trademarks of Siemens Product Lifecycle Management Software Inc. or its subsidiaries in the United States and in other countries. Nastran is a registered trademark of the National Aeronautics and Space Administration. All other logos, trademarks, registered trademarks or service marks used herein are the property of their respective holders. X10 21335 9/11 B